



Dent Road, Hartburn, Stockton-On-Tees, TS21 1FX

Offered with no onward chain, this stunning three bedroom detached house with a detached garage is located in the sought after Harebell Meadows development in Hartburn. Recently built by Persimmon Homes to their Sherwood design, it sits on a larger than average plot with numerous upgrades and still benefits from the NHBC warranty.

Inside, the hallway leads to a cloakroom/WC, the lounge and a spacious kitchen/dining room at the rear. The upgraded kitchen is completed to a high standard, featuring a range of contemporary units, a peninsular island, quartz worktops integrated gas hob, double oven, fridge freezer, dishwasher, and French doors opening to the rear garden. A utility room is fully fitted, providing extra storage and integrated washer/dryer.

Upstairs, the home has three well proportioned bedrooms, including a master bedroom with an en-suite shower room featuring a rainfall dual head shower. A family bathroom, with a shower over the bath, completes the living space.

The property includes combi gas central heating with dual zone thermostats, security lighting, upgraded flooring and is double glazed throughout.

Externally, to the front is an easy to maintain lawned garden and a block paved driveway leading to the detached garage. To the rear is a large lawned garden, patio and decked area.

Positioned on the outskirts of Stockton, this home is ideal for families and first-time buyers. Its prime location offers easy access to schools, shops, Hartburn Village and great commuter links via the A66 to Teesside Park, Darlington, Middlesbrough and beyond.

£255,000



Dent Road, Hartburn, Stockton-On-Tees, TS211FX

HALL

LOUNGE

12'10" x 11'8" (3.91m x 3.56m)

KITCHEN/DINING ROOM

17'11" x 9'3" (5.46m x 2.82m)

UTILITY ROOM

5'10" x 5'8" (1.78m x 1.73m)

DOWNSTAIRS WC

5'10" x 4'9" (1.78m x 1.45m)

LANDING

BEDROOM ONE

12'10" x 10'7" (3.91m x 3.23m)

ENSUITE

5'9" x 5'7" (1.75m x 1.70m)

BEDROOM TWO

9'4" x 9'4" (2.84m x 2.84m)

BEDROOM THREE

9'4" x 8'5" (2.84m x 2.57m)

BATHROOM

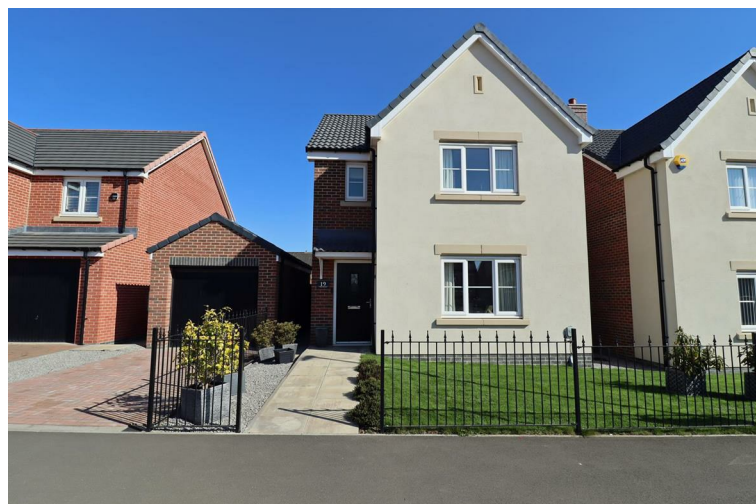
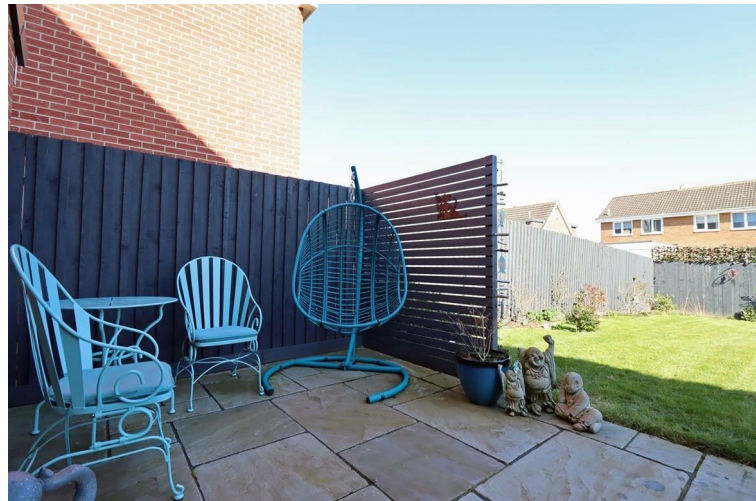
6'11" x 5'10" (2.11m x 1.78m)

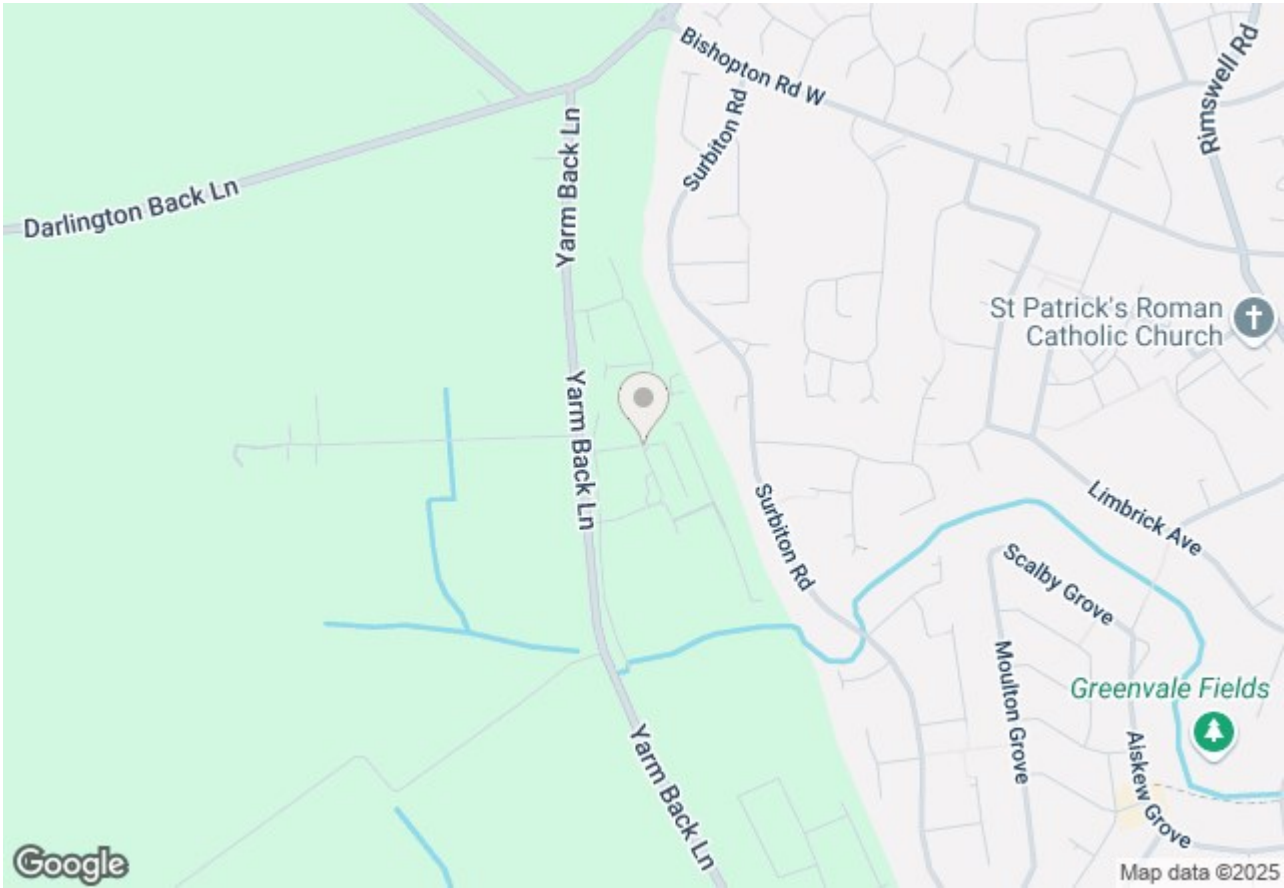
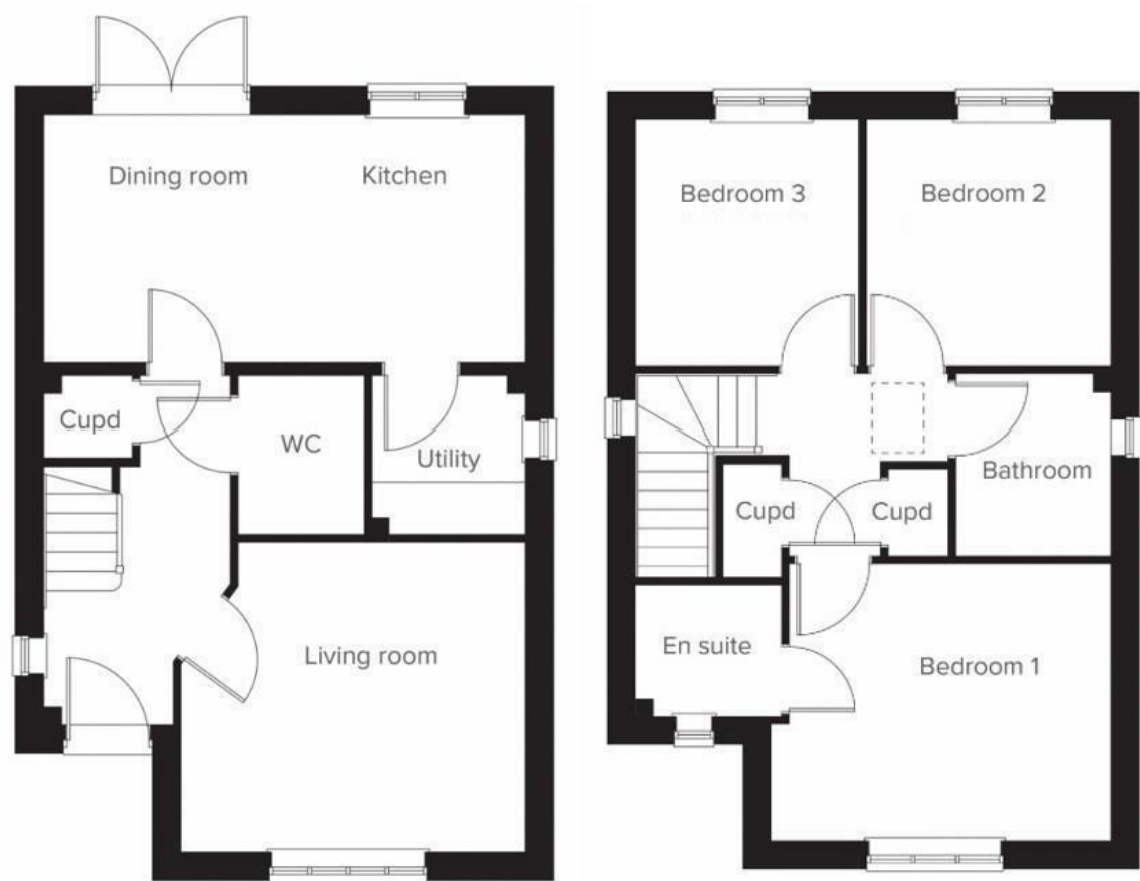
AML PROCEDURE

To comply with anti-money laundering regulations (AML) all estate agents must be registered with HMRC. Gowland White complies with this legislation by using an online AML risk assessment company, approved by the UK Government. Please note that all buyers are charged a fee of £36.00 (inc. VAT), for each buyer, to cover this process. These fees are payable before we can progress an agreed sale.

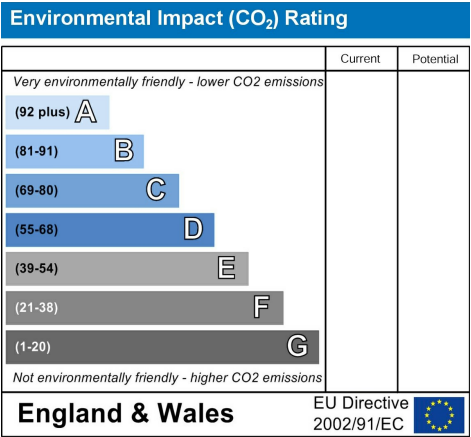
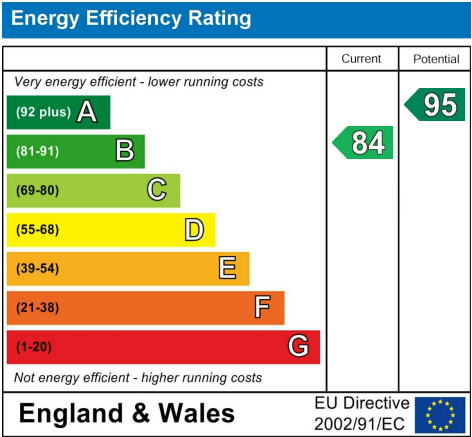








Dent Road, Hartburn, Stockton-On-Tees, TS21 1FX



VIEWING

Please contact us on 01642 615657 if you wish to arrange a viewing or would like more information.

These particulars, whilst believed to be accurate are set out as a general outline only for guidance and do not constitute any part of an offer or contract. Intending purchasers should not rely on them as statements of representation of fact, but must satisfy themselves by inspection or otherwise as to their accuracy. No person in this firms employment has the authority to make or give any representation or warranty in respect of the property.

17 Bishop Street, Stockton on Tees, TS18 1SY
stockton@gowlandwhite.co.uk